

# CCS-M Training Course 5 (T5)

## Remote Sensing Analysis

---

7 August 2014

Takumi ONUMA



[onuma.takumi@sred.co.jp](mailto:onuma.takumi@sred.co.jp)

Sumiko Resources Exploration & Development Co., Ltd.

# Presentations

1. Theory of remote sensing and spectrum
2. Spectral patterns and RGB color model
3. Geobotany and SAR data
4. Case Study -- ASTER and PALSAR data analysis in the area of ultramafic rock with vegetation –
5. Case Study -- Satellite data analysis in the vegetation area –
6. How to download free Landsat 8 data
7. How to process Landsat 8 data
8. How to download and process free ASTER GDEM data

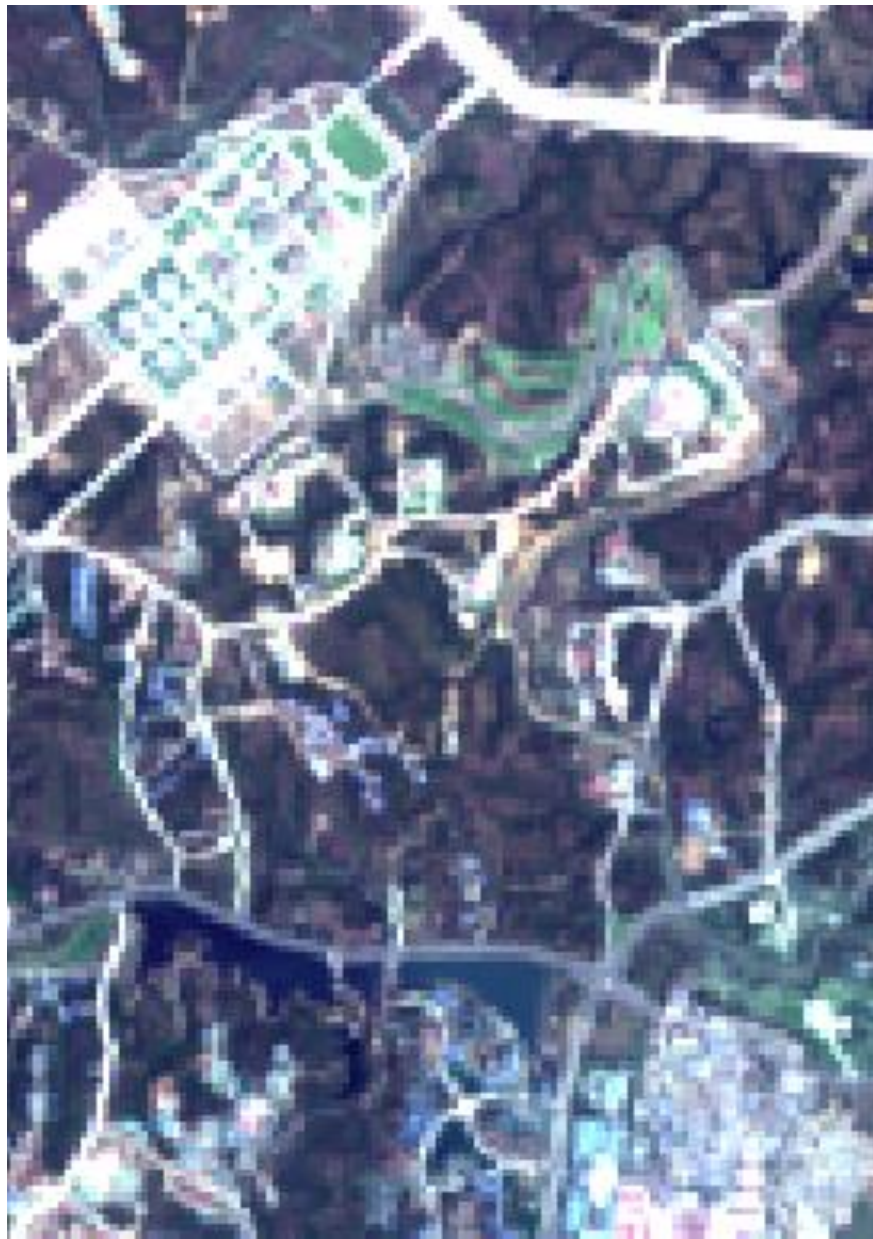
# Landsat 8 data: Spatial resolution=30m



Naypyitaw: Capital of Myanmar

Red part indicates vegetation

RGB=B4,B3,B2



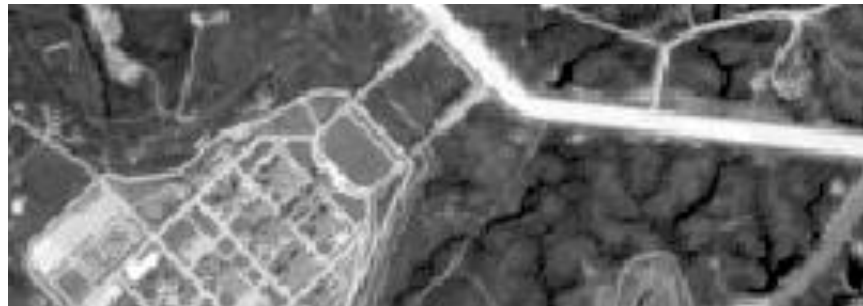
RGB=B5,B4,B3

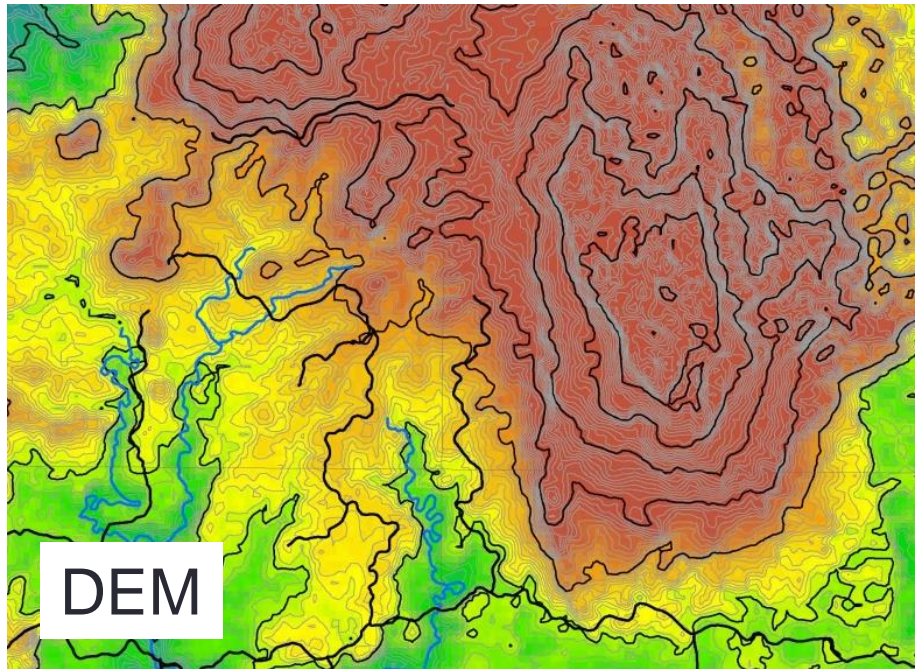
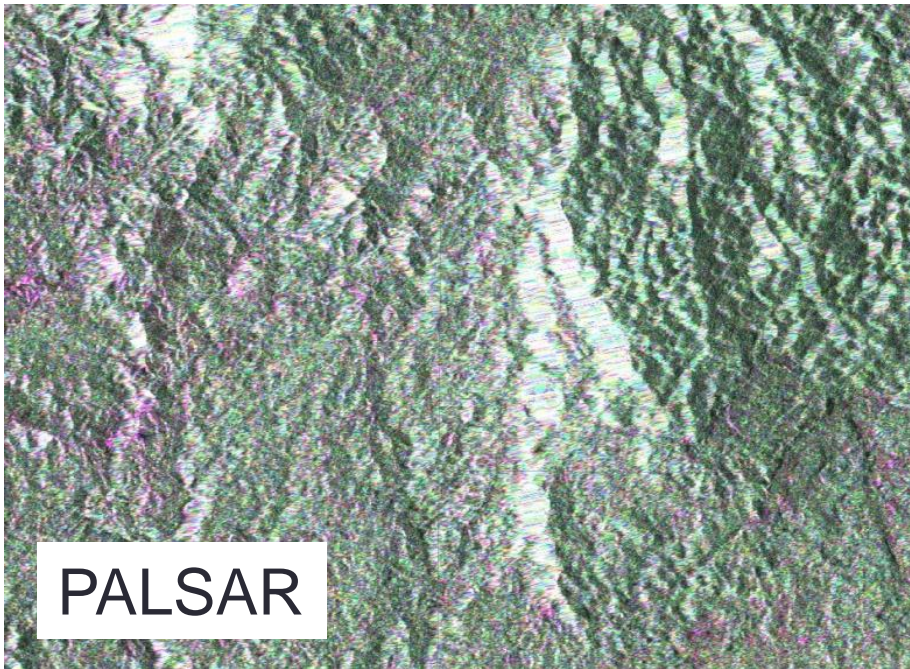
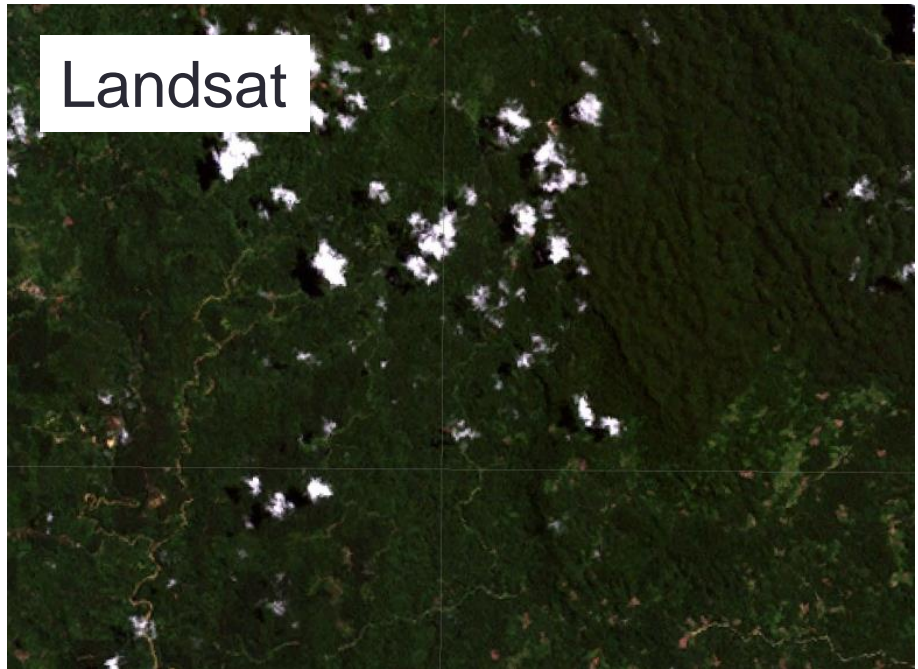
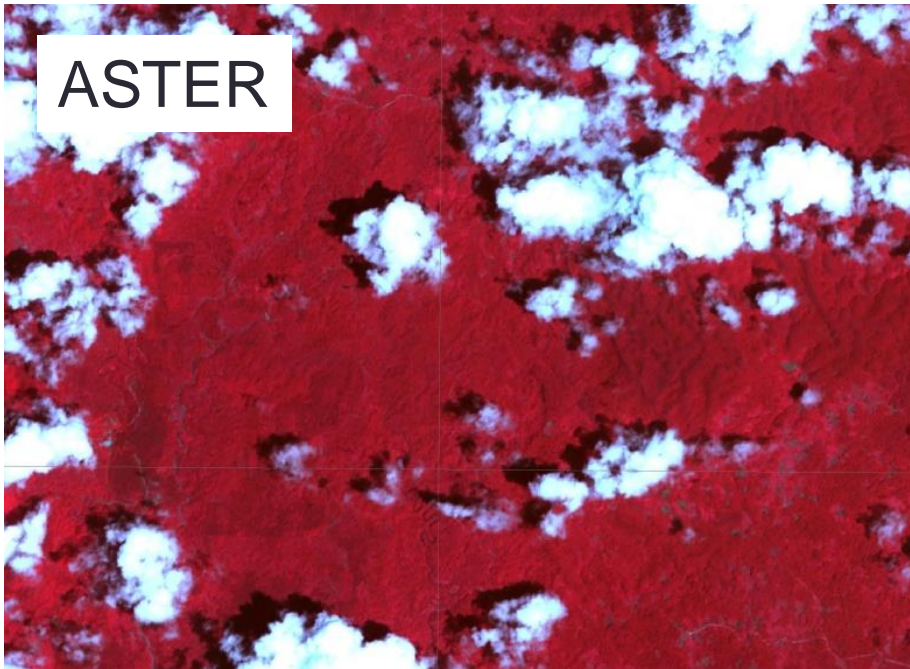


B4:3:2 / 30m resolution



B8 / 15m res.





# Presentations

1. Theory of remote sensing and spectrum
2. Spectral patterns and RGB color model
3. Geobotany and SAR data
4. Case Study -- ASTER and PALSAR data analysis in the area of ultramafic rock with vegetation –
5. Case Study -- Satellite data analysis in the vegetation area –

6. How to download free Landsat 8 data

Exercise

7. How to process Landsat 8 data

8. How to download and process free ASTER GDEM data