

Preliminary Preparations for the Training

1. WinSCP Installation

Download Site:

<http://winscp.net/eng/download.php>

2. Putty .exe file download

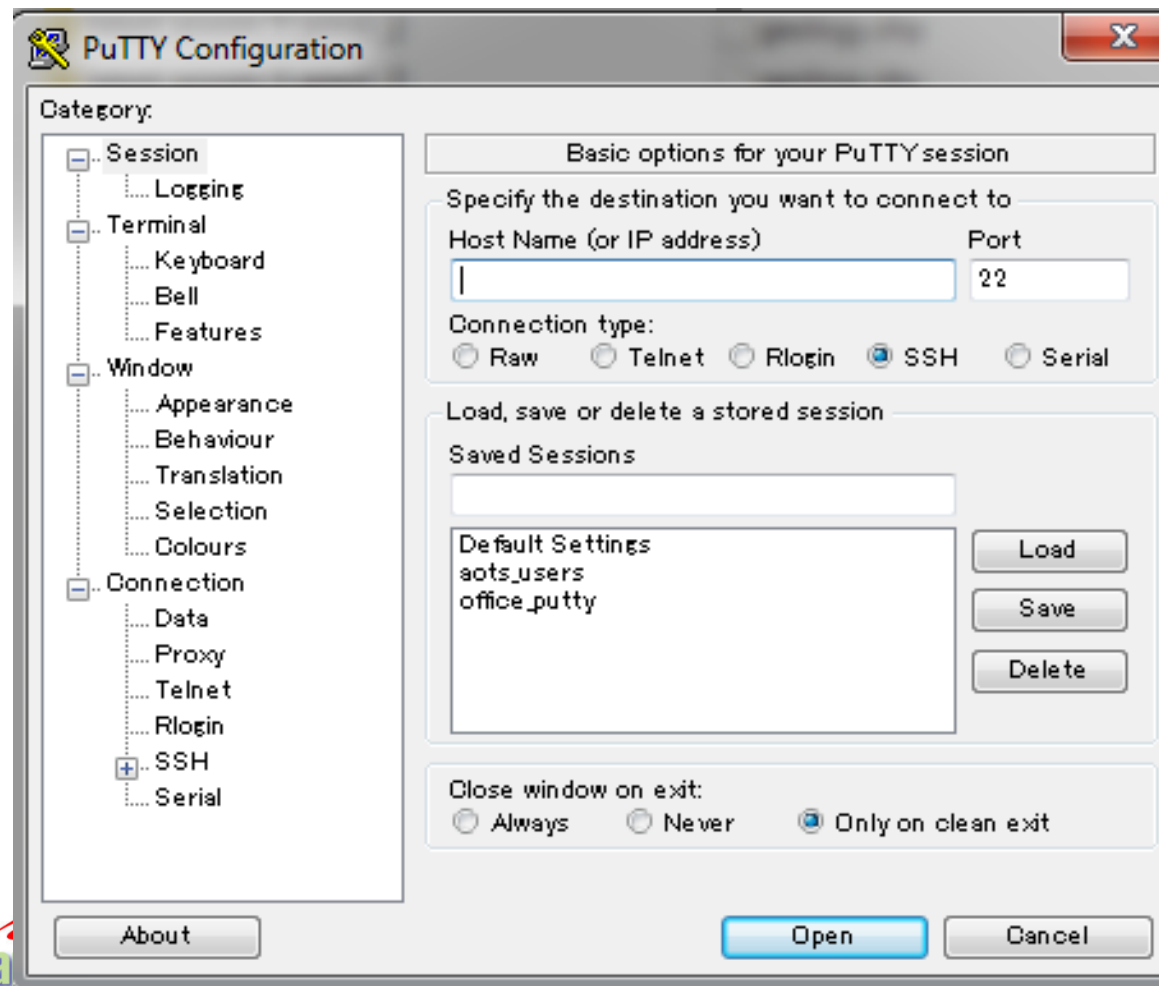
Download Site:

<http://www.chiark.greenend.org.uk/~sgtatham/putty/download.html>

Logging into the Server Using Putty

1. Run putty.exe from your PC

HOST: 192.168.1.145



Logging in to the Server Using Putty

HOST: 192.168.1.145

login as: co2_trainee

password: training2014

Create You Directory in the Server

Creating directory to the path:

/home/co2_trainee/**group_name**

Group Names

training_kor_group
training_lao_group
training_mys_group
training_phl_group
training_tha_group
training_khm_group
training_chn_group
training_idn_group
training_vnm_group

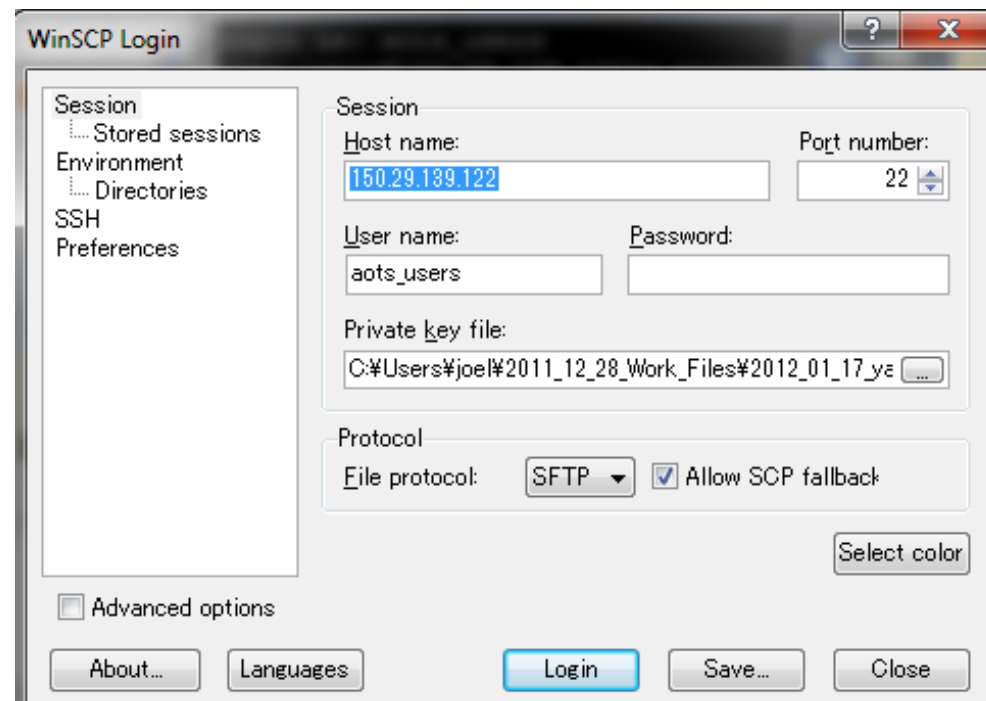
Command:

\$mkdir group_name

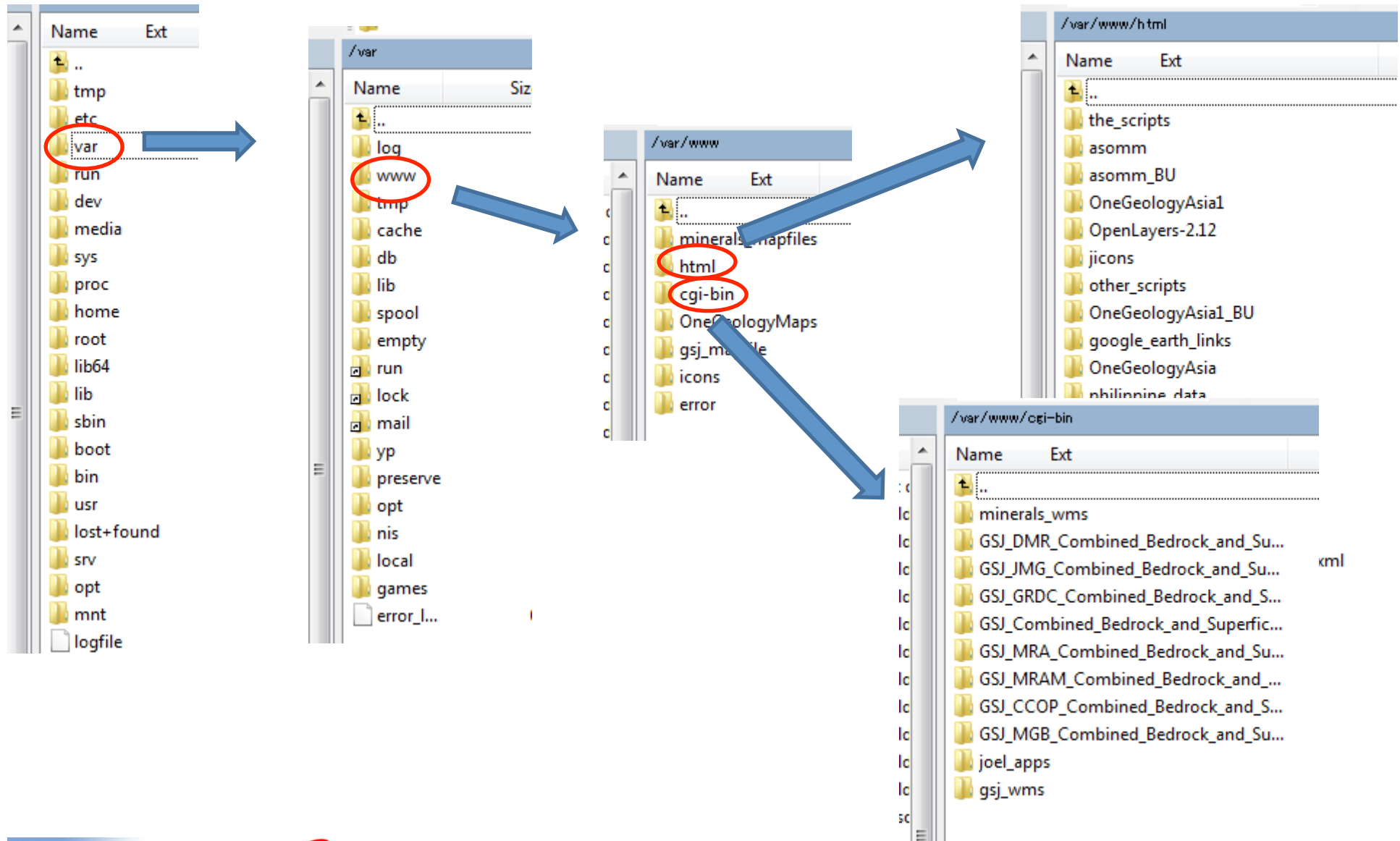
Copy Shape Files to the Server Using WinSCP

1. Run WinSCP

HOST: 192.168.1.145



LINUX OS Based Server Directory Structure



Linux OS Based Server File's URL Determination

At the HTML Folder
`/var/www/html/`

URL Format: `http://hostname or IP Address/path after the html directory`

e.g.

Hostname: `jcbwebgis.com`

Filelocation: `/var/www/html/assom/index.html`

URL: `http://jcbwebgis.com/assom/index.html`

e.g.

IP Address: `192.168.1.145`

Filelocation: `/var/www/html/assom/index.html`

URL: `http:// 192.168.1.145 /assom/index.html`

Linux OS Based Server File's URL Determination

At the cgi-bin Folder

URL Format: http://hostname or IP Address/cgi-bin/path after the cgi-bin directory

e.g.

Hostname: jcbwebgis.com

Filelocation: [/var/www/cgi-bin/my_wms/vsu_wms](#)

URL: http://jcbwebgis.com/cgi-bin/my_wms/ccop_wms

e.g.

IP Address: [192.168.1.145](#)

Filelocation: [/var/www/cgi-bin/my_wms/vsu_wms](#)

URL: [http:// 192.168.1.145/cgi-bin/my_wms/ccop_wms](http://192.168.1.145/cgi-bin/my_wms/ccop_wms)

LINUX File/Folder Permission/Rights

Numeric Representation

4 -> Read

2 -> Write

1 -> Execute

Levels:

4 - > Read only

6 (4+2) - > Read and write but can't execute

5 (4+1) - > Read and execute but can't change the file

1 - > *Only execute*

7 (4+2+1) -> All privileges. Read, write and execute.

LINUX File/Folder Permission/Rights

| | |
|-----------|--|
| 4 | - > Read only |
| 6 (4+2) | - > Read and write but can't execute |
| 5 (4+1) | - > Read and execute but can't change the file |
| 7 (4+2+1) | -> All privileges. Read, write and execute. |
| 1 | - > Only execute |

Normally represented by 3 digit number representing the permission of the owner, group and the whole world (Everybody).

Set by the command **chmod**:

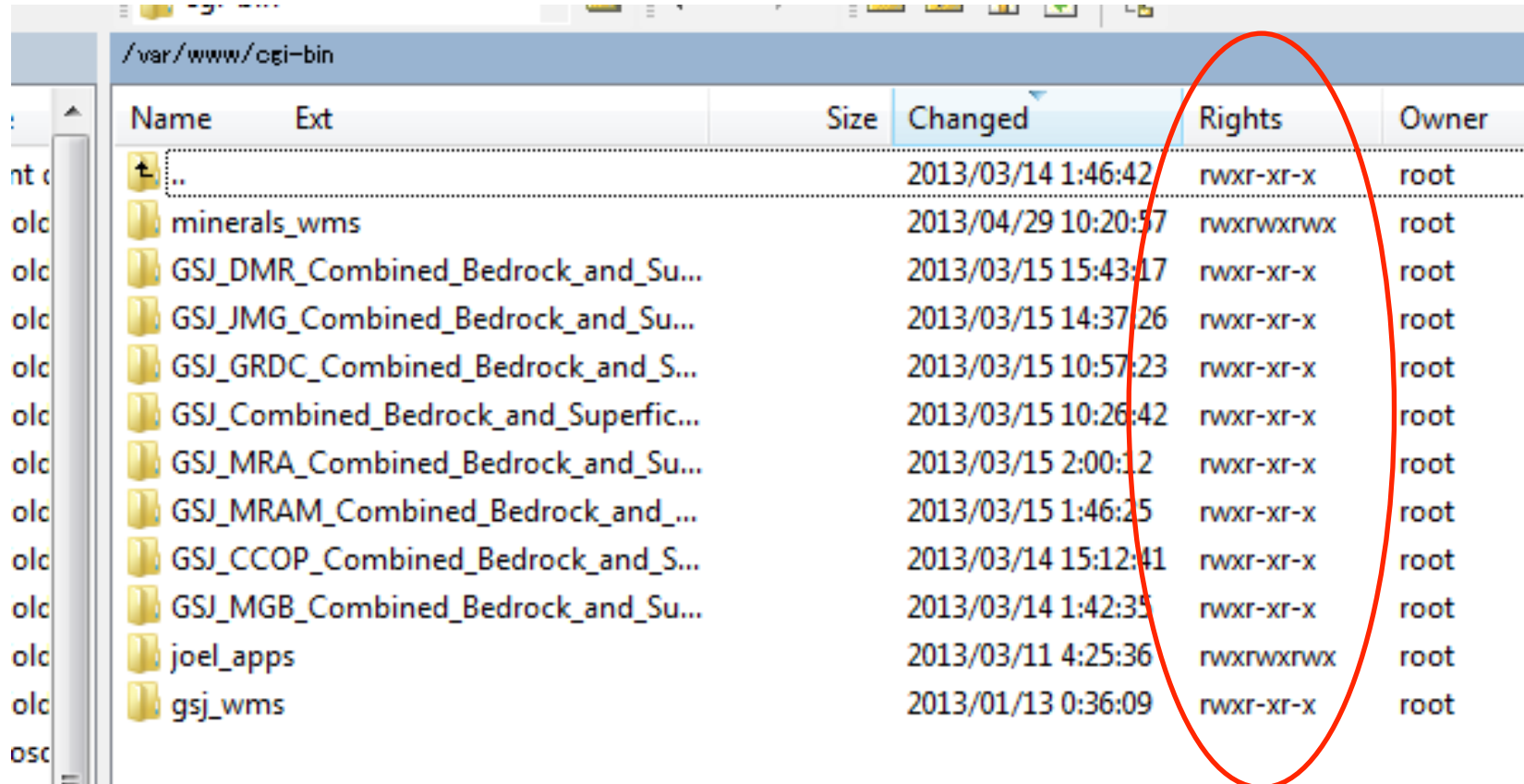
e.g.

```
$chmod 751 /var/www/cgi-bin/my_wms/vsu_wms
```

```
$chmod 777 /var/www/cgi-bin/my_wms/vsu_wms
```

| Owner | Group | Everybody | Permission |
|-------|-------|-----------|------------|
| 7 | 5 | 1 | 751 |
| 7 | 7 | 7 | 777 |

LINUX File/Folder Permission/Rights



The screenshot shows a terminal window with the following table of directory contents:

| Name | Ext | Size | Changed | Rights | Owner |
|--------------------------------------|-----|------|---------------------|-----------|-------|
| .. | | | 2013/03/14 1:46:42 | rwxr-xr-x | root |
| minerals_wms | | | 2013/04/29 10:20:57 | rwxrwxrwx | root |
| GSJ_DMR_Combined_Bedrock_and_Su... | | | 2013/03/15 15:43:17 | rwxr-xr-x | root |
| GSJ_JMG_Combined_Bedrock_and_Su... | | | 2013/03/15 14:37:26 | rwxr-xr-x | root |
| GSJ_GRDC_Combined_Bedrock_and_S... | | | 2013/03/15 10:57:23 | rwxr-xr-x | root |
| GSJ_Combined_Bedrock_and_Superfic... | | | 2013/03/15 10:26:42 | rwxr-xr-x | root |
| GSJ_MRA_Combined_Bedrock_and_Su... | | | 2013/03/15 2:00:12 | rwxr-xr-x | root |
| GSJ_MRAM_Combined_Bedrock_and_... | | | 2013/03/15 1:46:25 | rwxr-xr-x | root |
| GSJ_CCOP_Combined_Bedrock_and_S... | | | 2013/03/14 15:12:41 | rwxr-xr-x | root |
| GSJ_MGB_Combined_Bedrock_and_Su... | | | 2013/03/14 1:42:35 | rwxr-xr-x | root |
| joel_apps | | | 2013/03/11 4:25:36 | rwxrwxrwx | root |
| gsj_wms | | | 2013/01/13 0:36:09 | rwxr-xr-x | root |