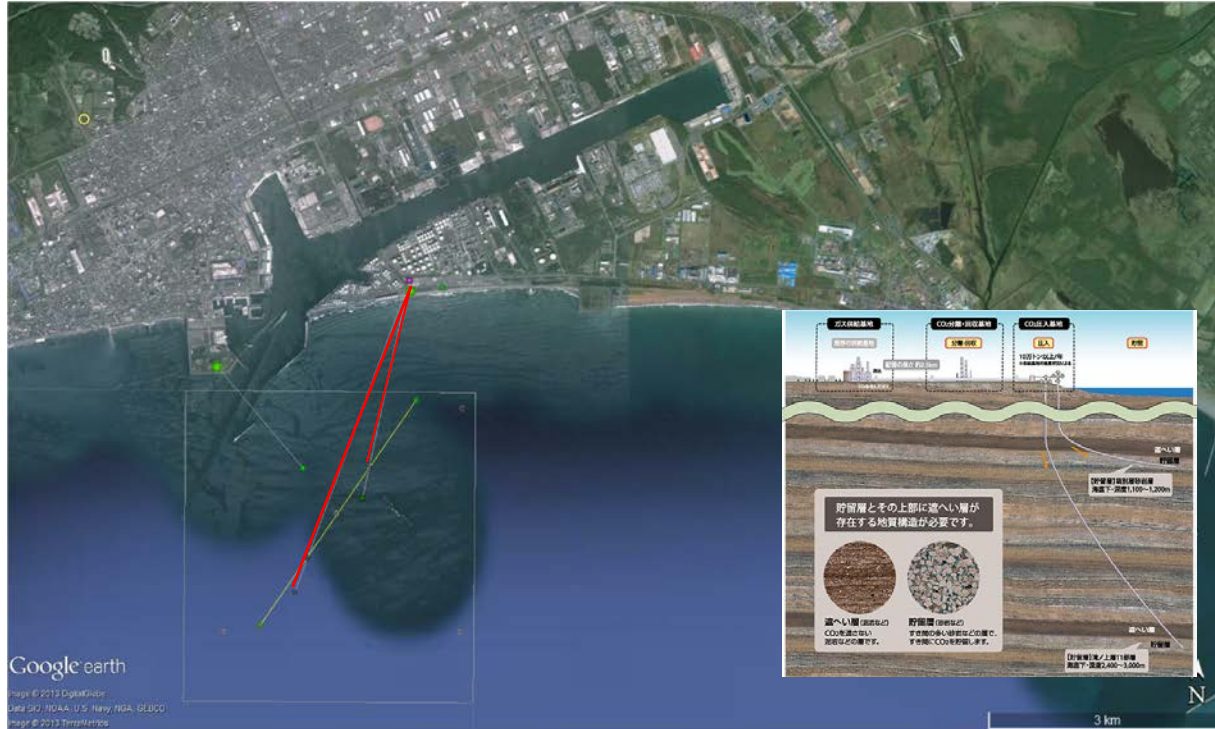


Progress report on Japanese CCS project

Kinichiro Kusunose
Geological Survey of Japan

Tomakomai Demonstration Project

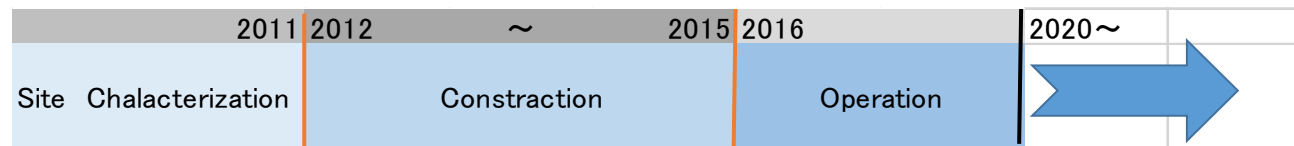
Tomakomai CCS Site



National R&D Schedule

Nagaoka	Tomakomai	
2003-2006	2016-2018	~2020
Land	Near shore	Off shore
	Refinery	Power plant?
Total 0.01Mt	~0.1Mt/year	~1Mt/year

Schedule of Tomakomai CCS Project



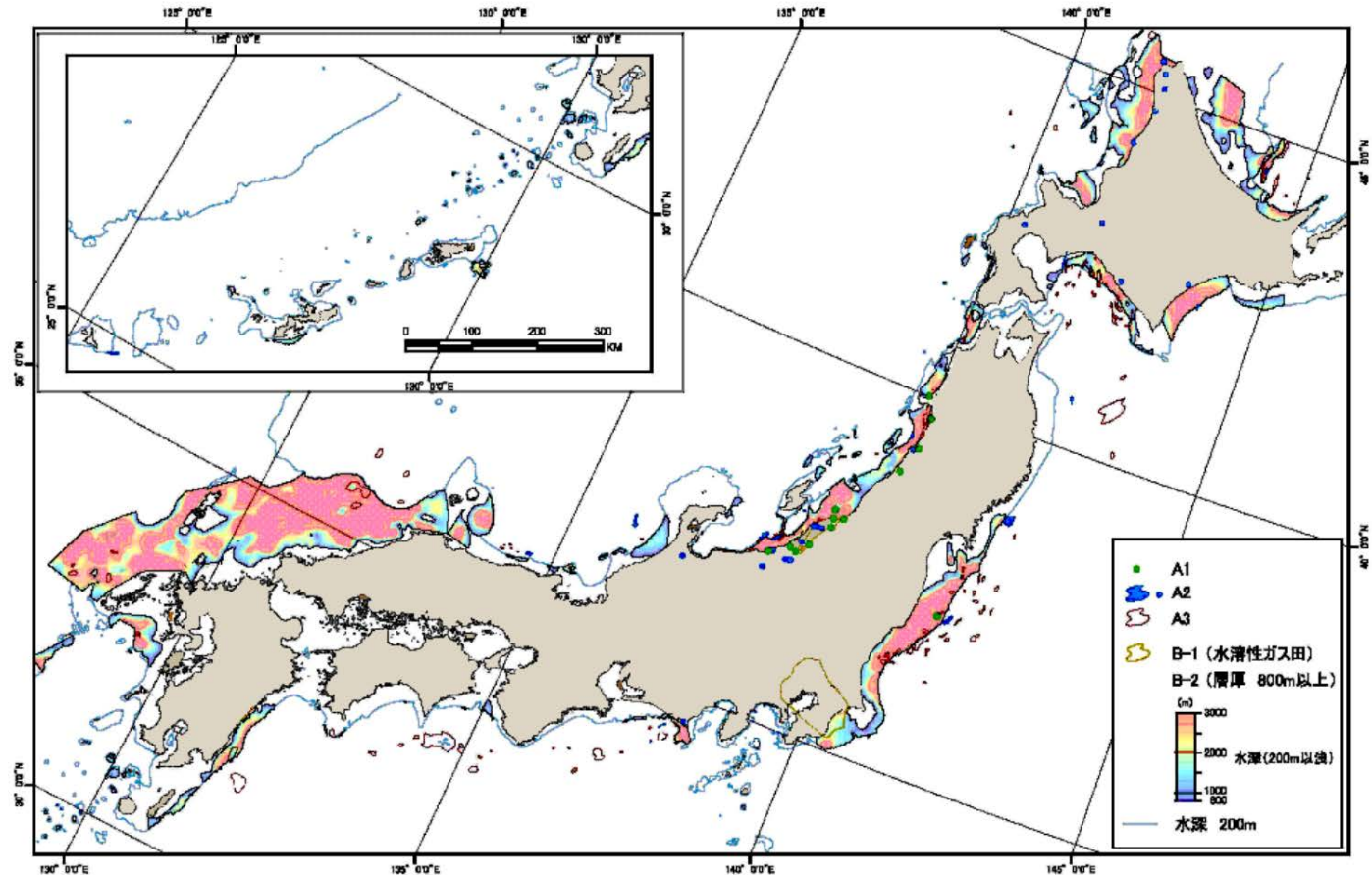
Site screening & Selection

Schedule of Site Screening

		2014	2015	2016	2017	2018	2019	2020	2021
2DSeismic	~ 20								
3DSeismic	~ 9								
Exploratory drilling	5								
Site Selection	3								

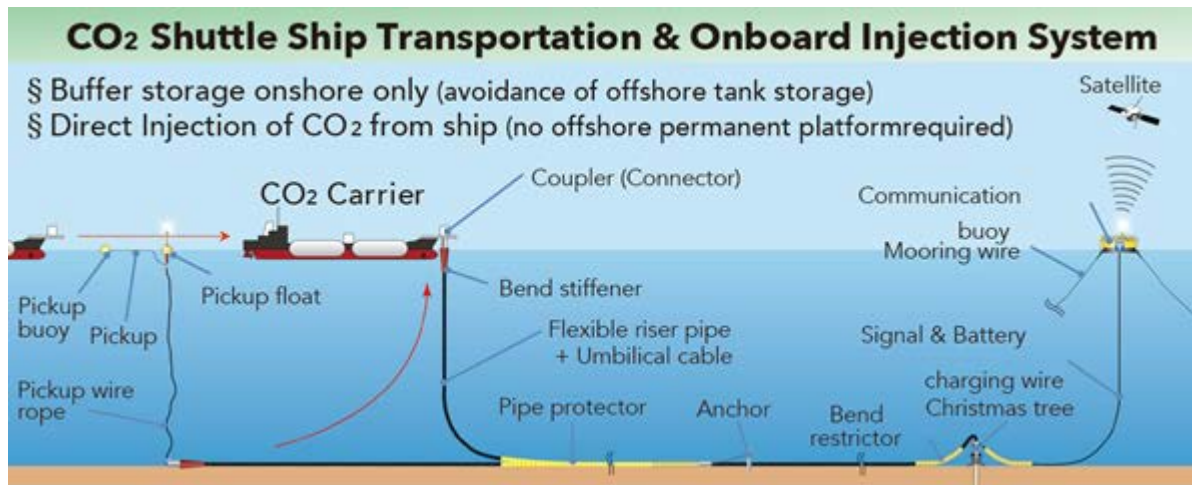
Candidate blocks

Ishikari-Rebun
Okhotsk
Southern Hokkaido-Kuji
Tokachi-Kushiro
Toshima-Tsugaru
Akita
Niigata-Toyama
Hokuriku-Oki
Saninn
Kamaishi-Kinkazan
J
Jyobann-Kashima
Tokai-Shikoku
Miyazaki
Amakusa-Goto

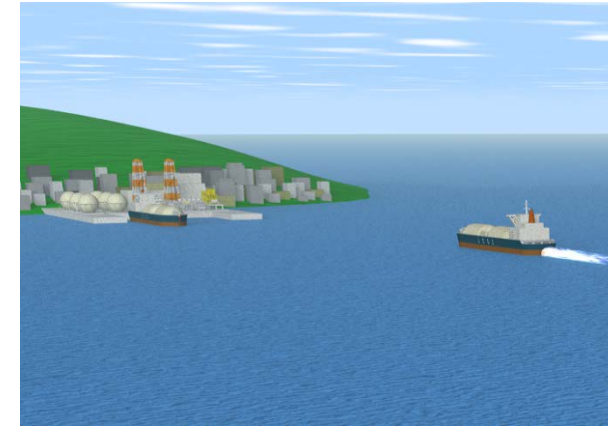


From RITE

Off Shore Storage FS



Ministry of the Environment, Japan



Tokyo univ.