

WEST LUZON BASIN PLAY TYPES

PLAY 1 / WI - (RB) (REEF BUILD-UP)

- (R) Early Miocene carbonates
- (C) Miocene carbonates and fine clastics

PLAY 2 / WI - (AN) (ANTICLINE)

- (R) Oligocene to Early Miocene sands and carbonates
- (C) Oligocene to Middle Miocene fine clastics

PLAY 3 / WI - (FB) (FAULT BLOCK)

- (R) Oligocene & Miocene turbidite sands, platform carbonates and channel sand deposit
- (C) Oligocene & Miocene mudstone, Early Miocene fine clastics, Oligocene & Miocene mudstone and shale

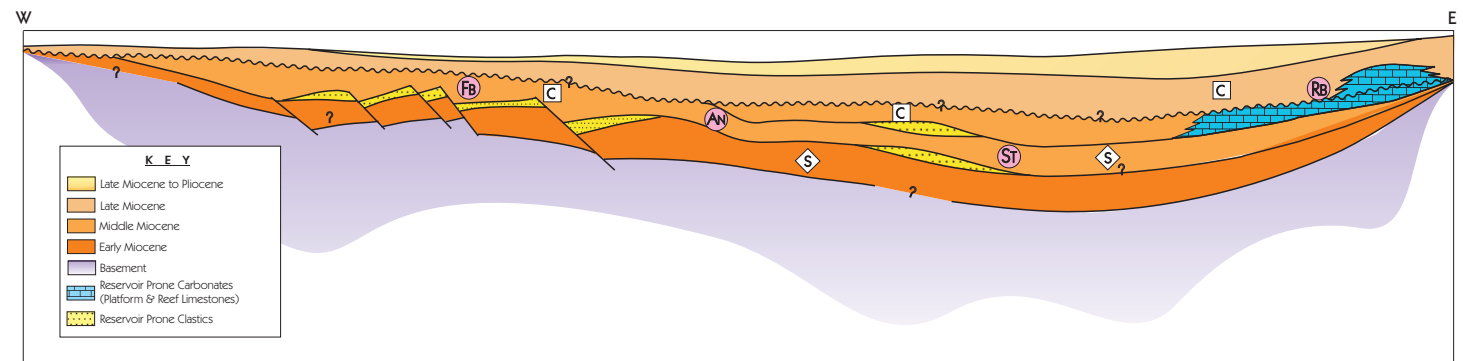
PLAY 4 / WI - (ST) (STRATIGRAPHIC)

- (R) Miocene bar & channel sands; turbidite sands in delta front, Miocene turbiditic sands, Jurassic arkosic & quartzs sands
- (C) Miocene fine clastics and shelf muds, Miocene mudstone & Tertiary fine clastics

PLAY COMPONENTS:

PRIMARY

- (S) Source Rock
- (R) Reservoir Rock
- (C) Cap-Rock



Schematic Play Concept Diagram for the Petroleum System in the West Luzon Basin