

VISAYAN BASIN PLAY TYPES

PLAY 1 / Vs - (RB) (REEF BUILDUPS)

- (R) Middle Miocene to Early Pliocene Reef build-ups
- (C) Middle Miocene to Pliocene shale, clays & marls

PLAY 2 / Vs - (AN) (ANTICLINE)

- (R) Late Oligocene to Late Miocene platform carbonate & sandstone
- (C) Late Miocene to Pleistocene shale, clays and marls

PLAY 3 / Vs - (ST) (STRATIGRAPHIC)

- (R) Middle to Late Miocene platform carbonate and sandstone
- (C) Middle to Late Miocene shale, clays and marls

PLAY 4 / Vs - (TF) (TILTED FAULTBLOCK)

- (R) Late Oligocene to Early Miocene sandstone
- (C) Late Oligocene to Early Miocene shale

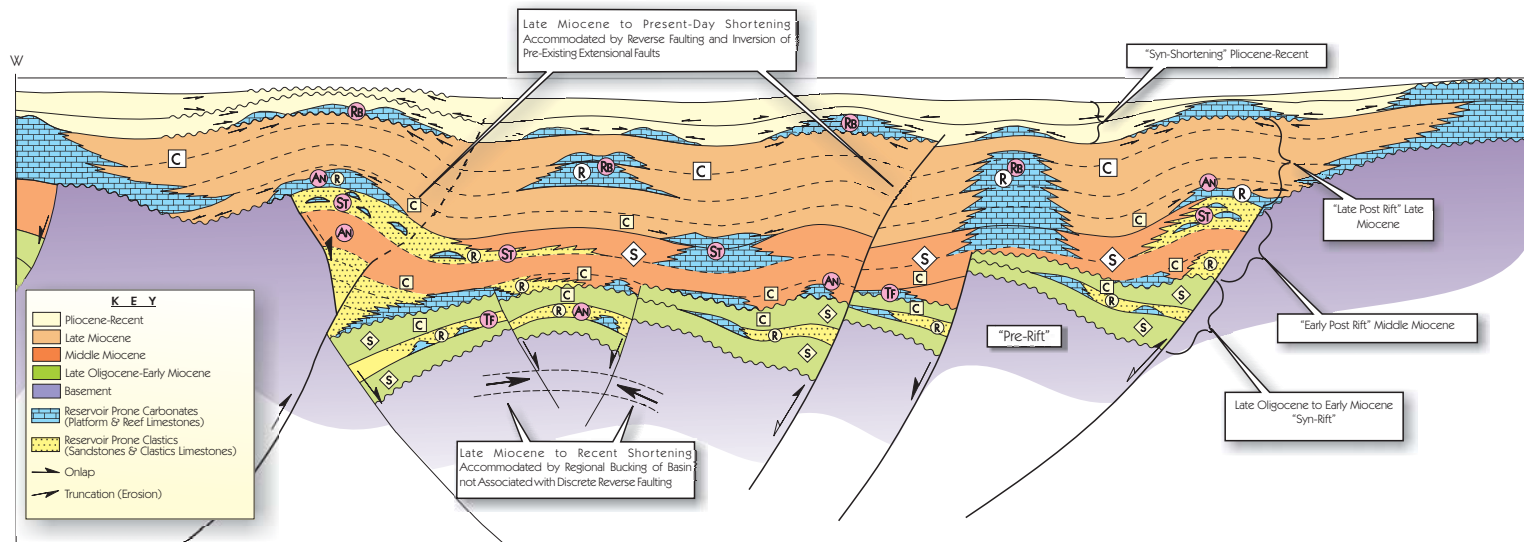
PLAY COMPONENTS:

PRIMARY

- (S) Source Rock
- (R) Reservoir Rock
- (C) Cap-Rock

SECONDARY

- (S) Source Rock
- (R) Reservoir Rock
- (C) Cap-Rock



Schematic Play Concept Diagram for the Petroleum System in the Visayan Basin